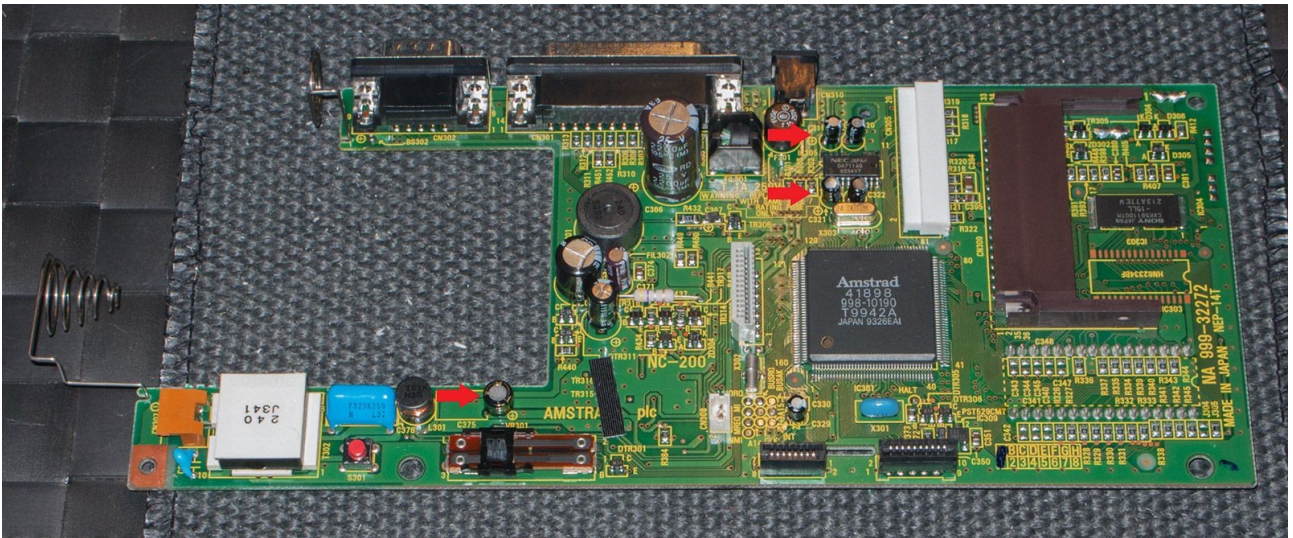


Amstrad NC200 Capacitors Values



Capacitors marked with an → need to be short otherwise it will not be possible to screw floppy drive and close the case

C319: 16V 10uF (Short)

C320: 16V 10uF (Short)

C321: 25V 4,7uF (Short)

C322: 25V 4,7uF (Short)

C329: 16V 10uF

C336: 16V 220uF (in some Models 25V 220uF)

C338: 16V 220uF

C370: 10V 1000uF

C371: 25V 22uF

C375: 16V 100uF (Short)